

**STEAB**

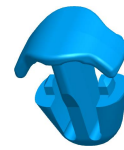
Via Ligo Corsi, 15 - 50141 FIRENZE - ITALIA - Tel. 055-416989 f.a. - Fax 055-416988 - www.steab.it

ALLEGATO TECNICO
Technical data sheet

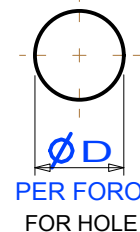
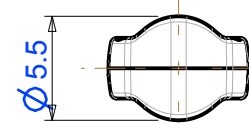
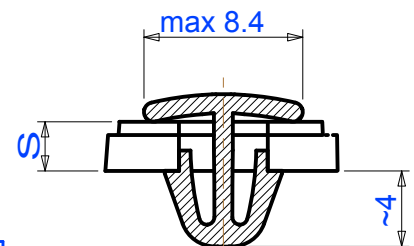
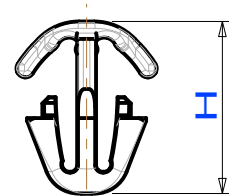
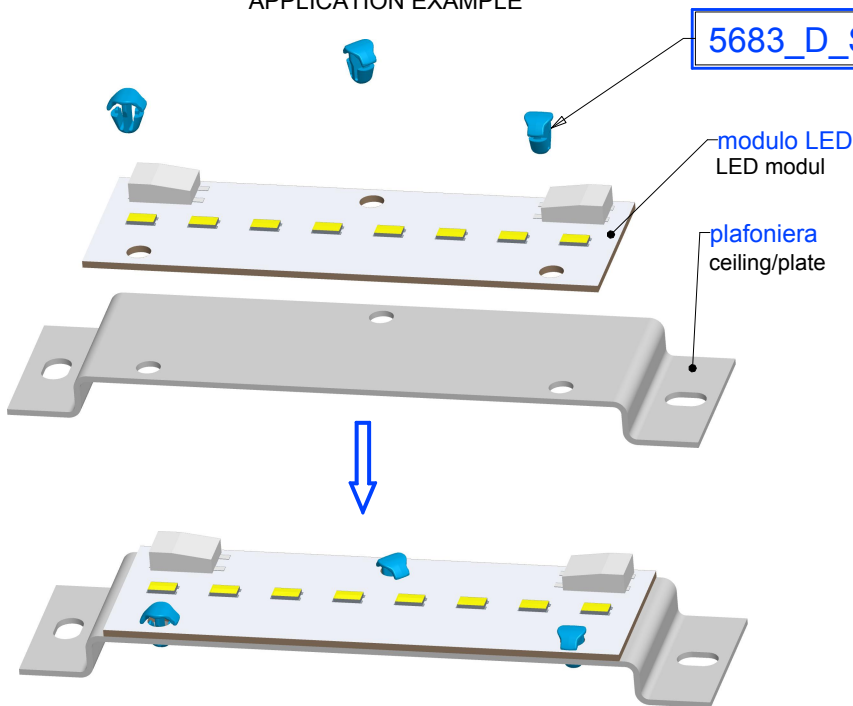
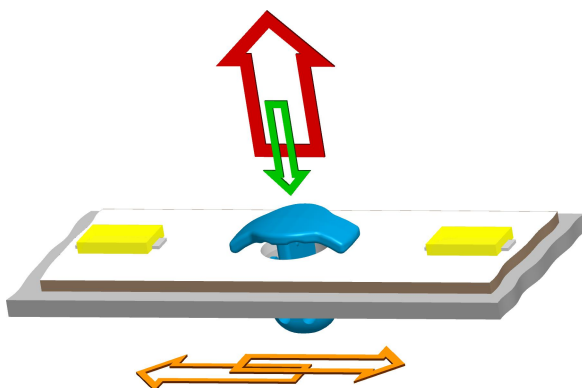
Codice documento:

SC-ALLT Rev.0

Rif./des.

5683_D_S**PERNO DI FISSAGGIO**
FIXING PUSH IN CLIP**A1**

| CODICE | PER FORO FOR HOLE $\varnothing D$ | PER SPESSORI FOR THICKNESSES $S_{da/a}^{FROM/TO}$ | ALTEZZA HEIGHT max H |
|-----------|---|---|----------------------------|
| 5683_3_2 | 3 | 1.4 / 2.6 | 8 |
| 5683_3_3 | 3 | 2.4 / 3.7 | 9.1 |
| 5683_4_2 | 4 | 1.4 / 2.6 | 8 |
| 5683_4_3 | 4 | 2.4 / 3.7 | 9.1 |
| 5683_47_2 | 4.7 | 1.4 / 2.6 | 8 |
| 5683_47_3 | 4.7 | 2.4 / 3.7 | 9.1 |

**ESEMPIO D'USO**
APPLICATION EXAMPLESCALA 1.000
Scale**CARATTERISTICHE MECCANICHE**
Forces overview

| | |
|--|--|
| | Forza per INSERIMENTO (indicativa) = min/max 0.5/2 Kg Insertion Force (approx) |
| | Resistenza a TRAZIONE = max 6 Kg Retention Force |
| | Resistenza a TAGLIO = max 12 Kg Shear Force |